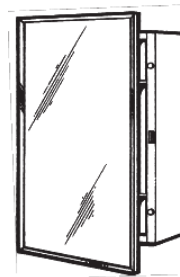


Styleline MEDICINE CABINET



FEATURES/TYPICAL SPECIFICATIONS

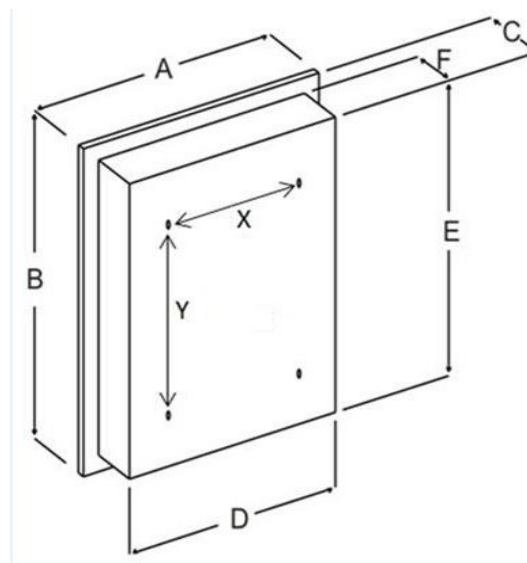
- Surface Mount Installation
 - Pre-drilled mounting holes spacing: y = 11.625" center-to-center and x = 9.0" center-to-center
- Formed and welded steel housing (WB/ST)
 - 24 gauge steel construction with white, heat cured, acrylic paint finish
- Framed mirror door
 - Polished Stainless Steel frame (SS8)
 - 3/32" thick float glass mirror door front
 - 26 gauge steel door back with white, heat cured, acrylic paint finish
- 16" piano hinge welded to the door and mechanically fastened to the cabinet body (HG01) (1 typical)
- Magnetic catch in cabinet body flange aligns to stainless steel striker plate on the door (1 typical)
- Reversible for left-hand or right-hand door swing
- High-Impact, clear polystyrene shelves (PC) (2 typical)
 - Fixed shelf - removable (FX2)
- Mounting hardware included
- Pallet quantity = 48 units

Finishes:

Housing: PT01—Basic white

Mirror: Flat Mirror

Frame: SS8—Polished Stainless Steel



		Dimensions In Inches					
Model #	Description	A	B	C	D	E	F
422SM	MEDCAB 1DR 14X20 SS8 WB/ST	14 $\frac{1}{8}$	20 $\frac{1}{8}$	5 $\frac{1}{8}$	13 $\frac{1}{2}$	17	4 $\frac{1}{2}$

REFERENCE	QTY.	REMARKS	Project
			Location
			Architect
			Engineer
			Contractor
			Submitted by Date