

Features

- 25+ artisan finishes including 12 PVD finishes
- All brass construction
- No additional wall or trap stabilizer kit required
- 10 gpm (37 L/min) tub filler max flow rate at 60 psi
- 2.0 gpm (7.6 L/min) or 1.8 gpm (6.8 L/min) handshower max flow rate
- 1/4 turn ceramic disc cartridge(s)

Codes/Standards Applicable

Product meets or exceeds the following:

- ASME A112.18.1/CSA B125.1
- CEC (1.8 gpm) / DOE (2.0 & 1.8 gpm)
- EPA WaterSense handshower (2.0 gpm)
- Commonwealth of MA
- ADA compliant (lever handles only)
- Local codes may require installation of an upstream tempering valve

1011-XX.20
1011-XX.18



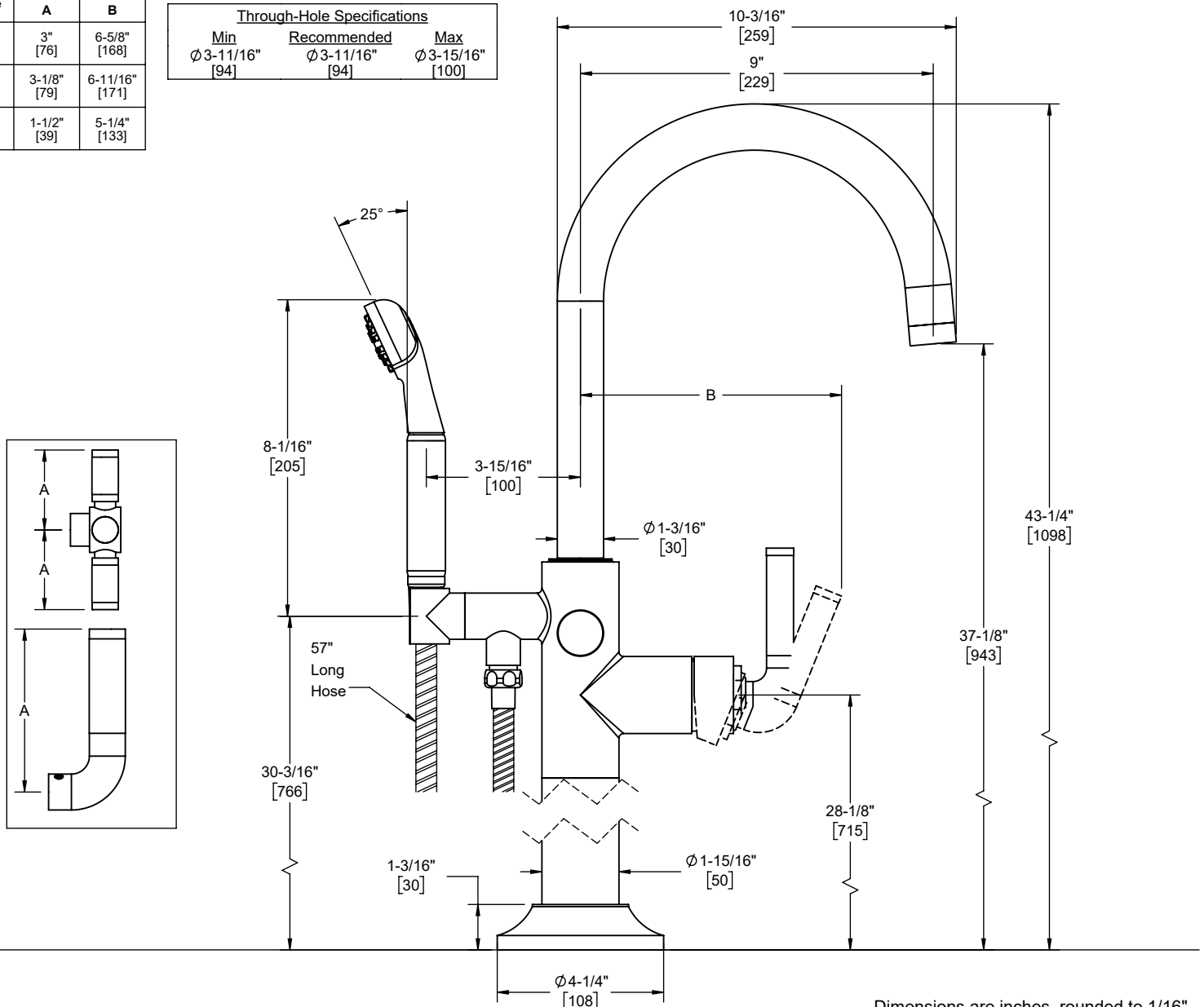
1011-30.FR shown

XX denotes handle series



Handle Series	A	B
30	3" [76]	6-5/8" [168]
30K 30F 30T	3-1/8" [79]	6-11/16" [171]
30X 30XF 30XT	1-1/2" [39]	5-1/4" [133]

Through-Hole Specifications		
Min	Recommended	Max
∅ 3-11/16" [94]	∅ 3-11/16" [94]	∅ 3-15/16" [100]



Specifications subject to change without notice

Dimensions are inches, rounded to 1/16"
[Dimensions in brackets are mm, rounded to 1mm]