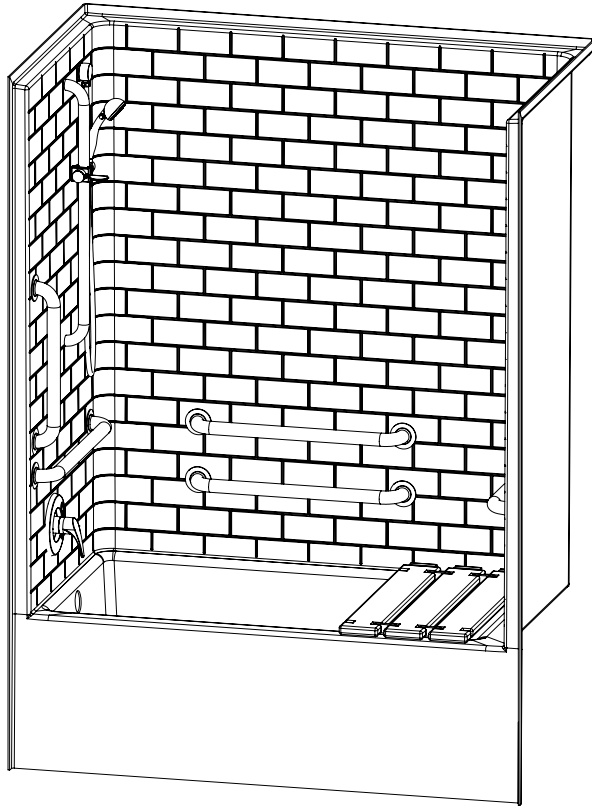


F6032STT – ACCESSIBLE TUB-SHOWERS

inches

Interior: 56 x 30 x 78 3/8

Exterior: 60 x 33 1/4 x 81 1/4



AQUATIC ADVANTAGE

- National distribution
- 7 manufacturing facilities
- Private fleet
- Centralized customer service
- Field support

COLOR & TRIM OPTIONS

Stock	Upgraded
White	Almond Biscuit Bone

**Additional custom colors available.
(Contact Customer Service)

FEATURES

- AcrylX™ applied acrylic surface
- 18" skirt
- Subway tile finish
- LH or RH drain
- Partial reinforcement to accommodate standard grab bar locations.
- Additional reinforcement available.
- Lifetime limited warranty (30 year commercial)

OPTIONS

- Grab bars
- Removable seat
- Hand-held shower assembly with slide bar
- Pressure balancing mixing valve
- Curtain rod and/or shower curtain

CODE COMPLIANCE

- ADA
- FHA
- ICC/ANSI A117.1
- IAPMO Z124-2017
- HUD UM73a
- CAN/CSA-B651-04
- CSA-B45-11

**Code compliant when fully equipped and installed according to guidelines.



Aquatic products may be
specified as Lasco Bathware.

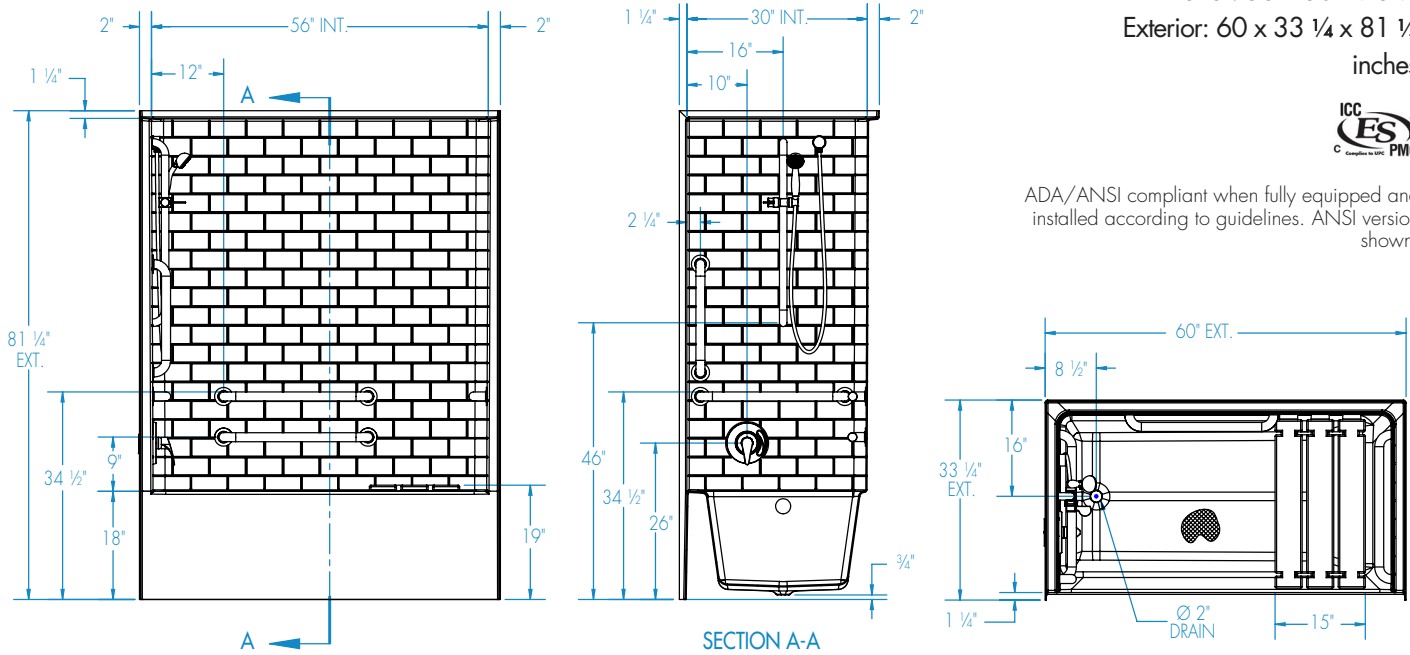


F6032STT

Interior: 56 x 30 x 78 ¾
Exterior: 60 x 33 ¼ x 81 ¼
inches



ADA/ANSI compliant when fully equipped and installed according to guidelines. ANSI version shown.



FEATURES

Dimensional Tolerance $\pm \frac{3}{8}$ ". Dimensions needed for site preparation should be measured from the unit. Aquatic assumes no responsibility for preparatory work.

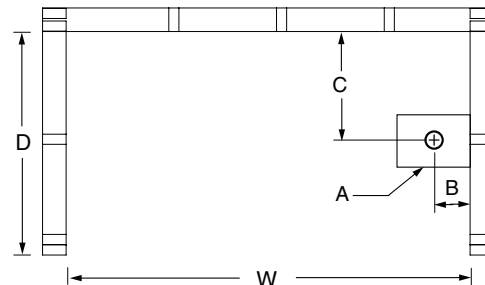
Type and Model #	Material	Wall Finish	Pieces	Drain	Skirt Height	Net Wt. lbs	Pkg. Wt. lbs
Tub-shower #F6032STT	AcrylX™	Subway tile	1	LH/RH	18" skirt	153	158

DIMENSIONS

Specifications	inches
Width: Ext./Int.	60 / 56
Depth: Ext./Int.	33 ¼ / 30
Height: Ext./Int.	81 ¼ / 78 ¾
Enclosure Opening:	56
Skirt Height:	18
Drain Rough-In (from Back Wall)	16
Drain Rough-In (from Side Wall)	2 ⅞
Drain: Diameter / Clearance	2 / ¾

FRAMING DIMENSIONS inches

Type	D Depth	W Width	H Height	A	B	C
Alcove	33 ¼	60 ⅞	-	6 x 12	2 ⅞	16



SUMP DATA

Top of Drain to Bottom of Overflow	Capacity to Overflow gal	WIDTH @ centerline		DEPTH @ centerline	
		Top	Bottom	Top	Bottom
12 ¾	52	49 ¾	42 ¼	25 ⅞	21 ⅞